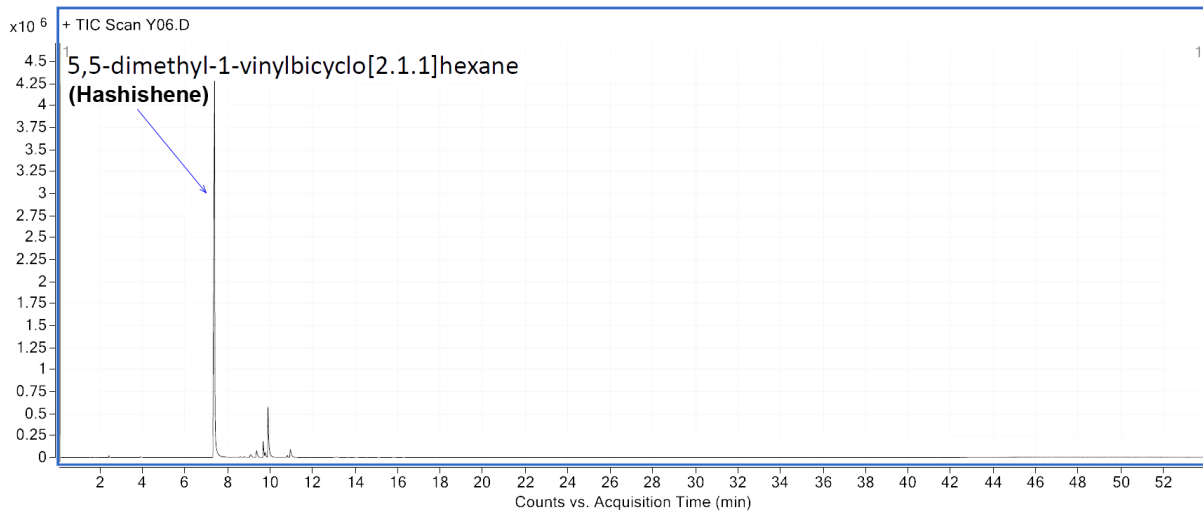


Batch No.:  

**1 Terpene Profile**

GC/MS



<b>Hashishene</b>	<b>80.33%</b>
<b>Pseudolimonene</b>	<b>9.59%</b>
<b><math>\beta</math>-Myrcene</b>	<b>2.31%</b>
<b>Isolimonene</b>	<b>2.26%</b>
<b>Camphene</b>	<b>1.77%</b>
<b><math>\beta</math>-Pinene</b>	<b>&lt; 1%</b>
<b>Terpinolene</b>	<b>&lt; 1%</b>
<b>D-Limonene</b>	<b>&lt; 1%</b>
<b>Perillene</b>	<b>&lt; 1%</b>

**2 Heavy Metal Analysis**

ICP, AAS (Hg)

As	Arsenic	< 0.1 ppm
Cd	Cadmium	< 0.1 ppm
Hg	Mercury	< 0.01 ppm
Pb	Lead	< 0.1 ppm

# Certificate of analysis

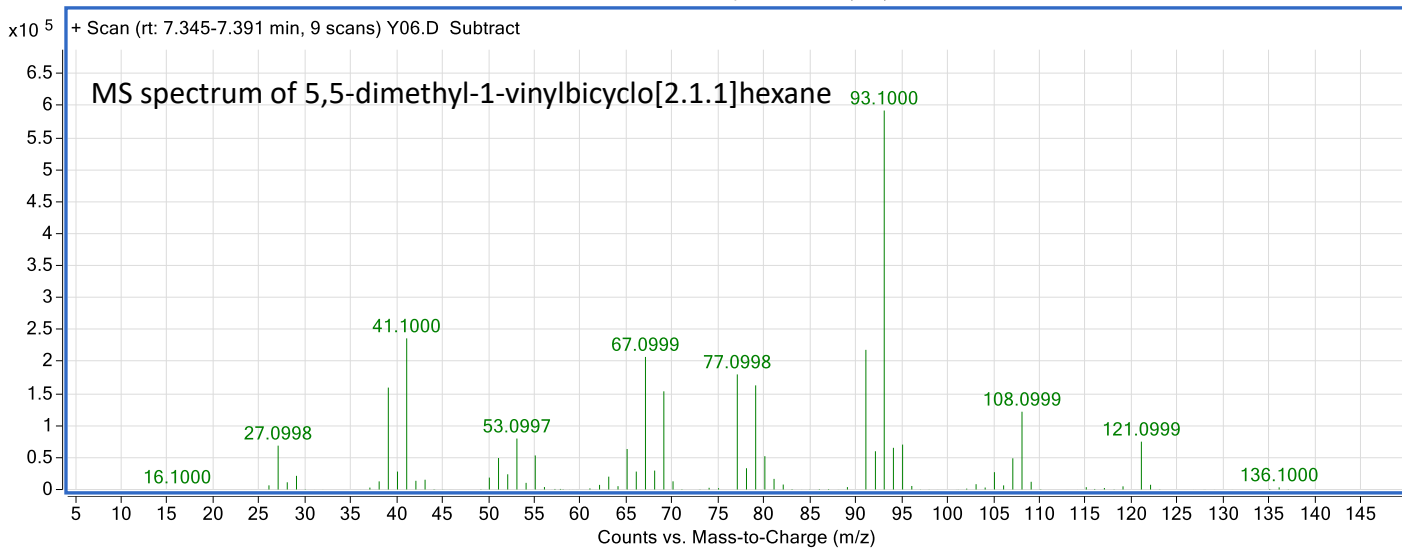
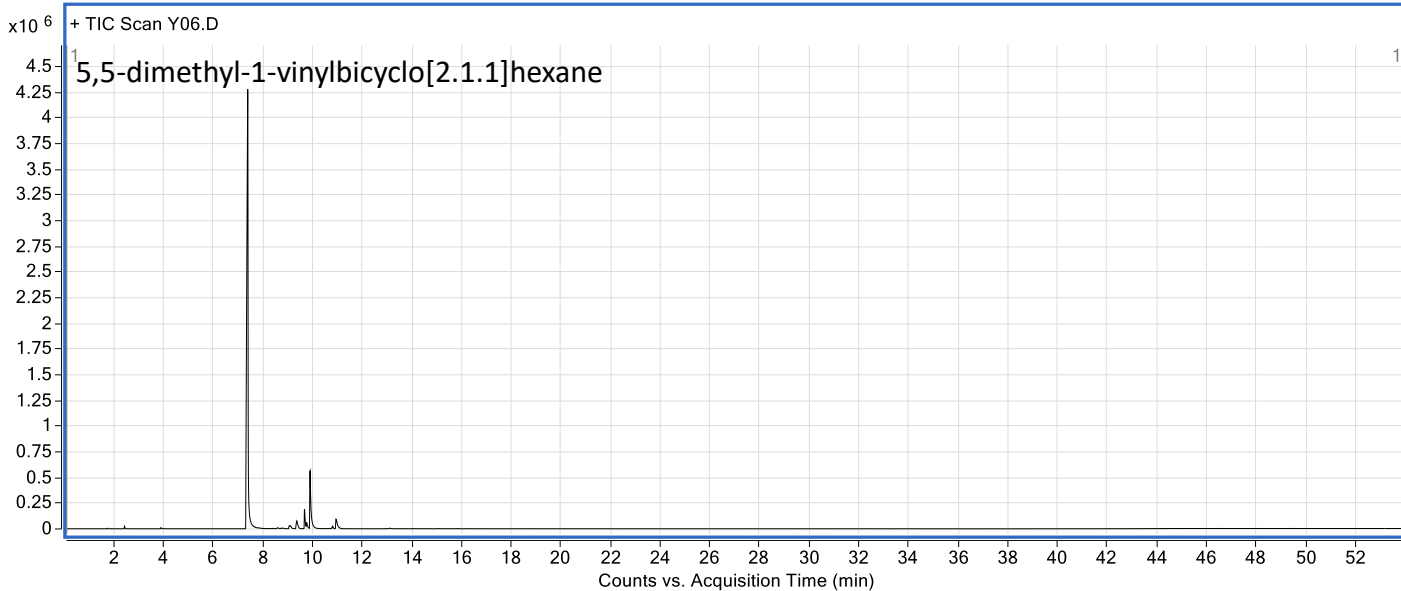
Gas chromatograph/Mass spectrometer: Agilent 7890GC/5975MSD

Column: HP-5ms, 30 m x 250  $\mu\text{m}$  x 0.25  $\mu\text{m}$

Injection volume: 2  $\mu\text{L}$  (split 500:1)

Run time: 54 min

Thermal gradient: 30 – 320  $^{\circ}\text{C}$  (30-180 $^{\circ}\text{C}$  step 5 $^{\circ}\text{C}/\text{min}$ ; 180-320 $^{\circ}\text{C}$  step 10 $^{\circ}\text{C}/\text{min}$ )



Purity of 5,5-dimethyl-1-vinylbicyclo[2.1.1]hexane in sample.....80.33 %